

International Financial Reporting Standard IFRS 16

Leases

January 2016

ILLUSTRATIVE EXAMPLES

International Financial Reporting Standards together with their accompanying documents are issued by the IFRS Foundation.

COPYRIGHT

Copyright © 2016 IFRS Foundation.

Reproduction of this extract within Australia in unaltered form (retaining this notice) is permitted for non-commercial use subject to the inclusion of an acknowledgment of the IFRS Foundation's copyright.

All other rights reserved. Requests and enquiries concerning reproduction and rights for commercial purposes within Australia or for any purpose outside Australia should be addressed to the IFRS Foundation at www.ifrs.org.

January 2016

Illustrative Examples
International Financial Reporting Standard[®]

IFRS 16 Leases

IASB[®]

 IFRS[®]

Illustrative Examples

IFRS 16 Leases

These Illustrative Examples accompany IFRS 16 *Leases* (issued January 2016; see separate booklet) and is published by the International Accounting Standards Board (IASB).

Disclaimer: the IASB, the IFRS Foundation, the authors and the publishers do not accept responsibility for any loss caused by acting or refraining from acting in reliance on the material in this publication, whether such loss is caused by negligence or otherwise.

International Financial Reporting Standards (including International Accounting Standards and SIC and IFRIC Interpretations), Exposure Drafts and other IASB and/or IFRS Foundation publications are copyright of the IFRS Foundation.

Copyright © 2016 IFRS Foundation®

ISBN for this part: 978-1-911040-06-4; ISBN for set of three parts: 978-1-911040-03-3

All rights reserved. No part of this publication may be translated, reprinted, reproduced or used in any form either in whole or in part or by any electronic, mechanical or other means, now known or hereafter invented, including photocopying and recording, or in any information storage and retrieval system, without prior permission in writing from the IFRS Foundation.

The approved text of International Financial Reporting Standards and other IASB publications is that published by the IASB in the English language. Copies may be obtained from the IFRS Foundation. Please address publications and copyright matters to:

IFRS Foundation Publications Department
30 Cannon Street, London EC4M 6XH, United Kingdom
Tel: +44 (0)20 7332 2730 Fax: +44 (0)20 7332 2749
Email: publications@ifrs.org Web: www.ifrs.org



The IFRS Foundation logo/the IASB logo/the IFRS for SMEs logo/‘Hexagon Device’, ‘IFRS Foundation’, ‘IFRS Taxonomy’, ‘eIFRS’, ‘IASB’, ‘IFRS for SMEs’, ‘IAS’, ‘IAss’, ‘IFRIC’, ‘IFRS’, ‘IFRSs’, ‘SIC’, ‘International Accounting Standards’ and ‘International Financial Reporting Standards’ are Trade Marks of the IFRS Foundation.

Further details of the Trade Marks, including details of countries where the Trade Marks are registered or applied for, are available from the IFRS Foundation on request.

The IFRS Foundation is a not-for-profit corporation under the General Corporation Law of the State of Delaware, USA and operates in England and Wales as an overseas company (Company number: FC023235) with its principal office as above.

CONTENTS

	<i>from paragraph</i>
IFRS 16 LEASES ILLUSTRATIVE EXAMPLES	
IDENTIFYING A LEASE	IE2
Example 1—Rail cars	
Example 2—Concession space	
Example 3—Fibre-optic cable	
Example 4—Retail unit	
Example 5—Truck rental	
Example 6—Ship	
Example 7—Aircraft	
Example 8—Contract for shirts	
Example 9—Contract for energy/power	
Example 10—Contract for network services	
LEASES OF LOW-VALUE ASSETS AND PORTFOLIO APPLICATION	IE3
Example 11—Leases of low-value assets and portfolio application	
ALLOCATING CONSIDERATION TO COMPONENTS OF A CONTRACT	IE4
Example 12—Lessee allocation of consideration to lease and non-lease components of a contract	
LESSEE MEASUREMENT	IE5
Example 13—Measurement by a lessee and accounting for a change in the lease term	
VARIABLE LEASE PAYMENTS	IE6
Example 14—Variable lease payments dependent on an index and variable lease payments linked to sales	
LEASE MODIFICATIONS	IE7
Example 15—Modification that is a separate lease	
Example 16—Modification that increases the scope of the lease by extending the contractual lease term	
Example 17—Modification that decreases the scope of the lease	
Example 18—Modification that both increases and decreases the scope of the lease	
Example 19—Modification that is a change in consideration only	
SUBLEASES	IE8
Example 20—Sublease classified as a finance lease	
Example 21—Sublease classified as an operating lease	
LESSEE DISCLOSURE	IE9
Example 22—Variable payment terms	
Example 23—Extension options and termination options	

SALE AND LEASEBACK TRANSACTIONS

IE11

Example 24—Sale and leaseback transaction

APPENDIX

AMENDMENTS TO GUIDANCE ON OTHER STANDARDS

IFRS 16 Leases Illustrative Examples

These examples accompany, but are not part of, IFRS 16. They illustrate aspects of IFRS 16 but are not intended to provide interpretative guidance.

IE1 These examples portray hypothetical situations illustrating how an entity might apply some of the requirements in IFRS 16 to particular aspects of a lease (or other contracts) on the basis of the limited facts presented. The analysis in each example is not intended to represent the only manner in which the requirements could be applied, nor are the examples intended to apply only to the specific industry illustrated. Although some aspects of the examples may be present in actual fact patterns, all relevant facts and circumstances of a particular fact pattern would need to be evaluated when applying IFRS 16.

Identifying a lease (paragraphs 9–11 and B9–B30)

IE2 The following examples illustrate how an entity determines whether a contract is, or contains, a lease.

Example 1—Rail cars

Example 1A: a contract between Customer and a freight carrier (Supplier) provides Customer with the use of 10 rail cars of a particular type for five years. The contract specifies the rail cars; the cars are owned by Supplier. Customer determines when, where and which goods are to be transported using the cars. When the cars are not in use, they are kept at Customer's premises. Customer can use the cars for another purpose (for example, storage) if it so chooses. However, the contract specifies that Customer cannot transport particular types of cargo (for example, explosives). If a particular car needs to be serviced or repaired, Supplier is required to substitute a car of the same type. Otherwise, and other than on default by Customer, Supplier cannot retrieve the cars during the five-year period.

The contract also requires Supplier to provide an engine and a driver when requested by Customer. Supplier keeps the engines at its premises and provides instructions to the driver detailing Customer's requests to transport goods. Supplier can choose to use any one of a number of engines to fulfil each of Customer's requests, and one engine could be used to transport not only Customer's goods, but also the goods of other customers (ie if other customers require the transportation of goods to destinations close to the destination requested by Customer and within a similar timeframe, Supplier can choose to attach up to 100 rail cars to the engine).

The contract contains leases of rail cars. Customer has the right to use 10 rail cars for five years.

There are 10 identified cars. The cars are explicitly specified in the contract. Once delivered to Customer, the cars can be substituted only when they need to be serviced or repaired (see paragraph B18). The engine used to transport the rail cars is not an identified asset because it is neither explicitly specified nor implicitly specified in the contract.

continued...

...continued

Example 1—Rail cars	
<p>Customer has the right to control the use of the 10 rail cars throughout the five-year period of use because:</p>	
(a)	<p>Customer has the right to obtain substantially all of the economic benefits from use of the cars over the five-year period of use. Customer has exclusive use of the cars throughout the period of use, including when they are not being used to transport Customer's goods.</p>
(b)	<p>Customer has the right to direct the use of the cars because the conditions in paragraph B24(a) exist. The contractual restrictions on the cargo that can be transported by the cars are protective rights of Supplier and define the scope of Customer's right to use the cars. Within the scope of its right of use defined in the contract, Customer makes the relevant decisions about how and for what purpose the cars are used by being able to decide when and where the rail cars will be used and which goods are transported using the cars. Customer also determines whether and how the cars will be used when not being used to transport its goods (for example, whether and when they will be used for storage). Customer has the right to change these decisions during the five-year period of use.</p>
<p>Although having an engine and driver (controlled by Supplier) to transport the rail cars is essential to the efficient use of the cars, Supplier's decisions in this regard do not give it the right to direct how and for what purpose the rail cars are used. Consequently, Supplier does not control the use of the cars during the period of use.</p>	

continued...

...continued

Example 1—Rail cars

Example 1B: the contract between Customer and Supplier requires Supplier to transport a specified quantity of goods by using a specified type of rail car in accordance with a stated timetable for a period of five years. The timetable and quantity of goods specified are equivalent to Customer having the use of 10 rail cars for five years. Supplier provides the rail cars, driver and engine as part of the contract. The contract states the nature and quantity of the goods to be transported (and the type of rail car to be used to transport the goods). Supplier has a large pool of similar cars that can be used to fulfil the requirements of the contract. Similarly, Supplier can choose to use any one of a number of engines to fulfil each of Customer's requests, and one engine could be used to transport not only Customer's goods, but also the goods of other customers. The cars and engines are stored at Supplier's premises when not being used to transport goods.

The contract does not contain a lease of rail cars or of an engine.

The rail cars and the engines used to transport Customer's goods are not identified assets. Supplier has the substantive right to substitute the rail cars and engine because:

- (a) Supplier has the practical ability to substitute each car and the engine throughout the period of use (see paragraph B14(a)). Alternative cars and engines are readily available to Supplier and Supplier can substitute each car and the engine without Customer's approval.
- (b) Supplier would benefit economically from substituting each car and the engine (see paragraph B14(b)). There would be minimal, if any, cost associated with substituting each car or the engine because the cars and engines are stored at Supplier's premises and Supplier has a large pool of similar cars and engines. Supplier benefits from substituting each car or the engine in contracts of this nature because substitution allows Supplier to, for example, (i) use cars or an engine to fulfil a task for which the cars or engine are already positioned to perform (for example, a task at a rail yard close to the point of origin) or (ii) use cars or an engine that would otherwise be sitting idle because they are not being used by a customer.

Accordingly, Customer does not direct the use, nor have the right to obtain substantially all of the economic benefits from use, of an identified car or an engine. Supplier directs the use of the rail cars and engine by selecting which cars and engine are used for each particular delivery and obtains substantially all of the economic benefits from use of the rail cars and engine. Supplier is only providing freight capacity.

Example 2—Concession space

A coffee company (Customer) enters into a contract with an airport operator (Supplier) to use a space in the airport to sell its goods for a three-year period. The contract states the amount of space and that the space may be located at any one of several boarding areas within the airport. Supplier has the right to change the location of the space allocated to Customer at any time during the period of use. There are minimal costs to Supplier associated with changing the space for the Customer: Customer uses a kiosk (that it owns) that can be moved easily to sell its goods. There are many areas in the airport that are available and that would meet the specifications for the space in the contract.

The contract does not contain a lease.

Although the amount of space Customer uses is specified in the contract, there is no identified asset. Customer controls its owned kiosk. However, the contract is for space in the airport, and this space can change at the discretion of Supplier. Supplier has the substantive right to substitute the space Customer uses because:

- (a) Supplier has the practical ability to change the space used by Customer throughout the period of use (see paragraph B14(a)). There are many areas in the airport that meet the specifications for the space in the contract, and Supplier has the right to change the location of the space to other space that meets the specifications at any time without Customer's approval.
- (b) Supplier would benefit economically from substituting the space (see paragraph B14(b)). There would be minimal cost associated with changing the space used by Customer because the kiosk can be moved easily. Supplier benefits from substituting the space in the airport because substitution allows Supplier to make the most effective use of the space at boarding areas in the airport to meet changing circumstances.

Example 3—Fibre-optic cable

Example 3A: Customer enters into a 15-year contract with a utilities company (Supplier) for the right to use three specified, physically distinct dark fibres within a larger cable connecting Hong Kong to Tokyo. Customer makes the decisions about the use of the fibres by connecting each end of the fibres to its electronic equipment (ie Customer 'lights' the fibres and decides what data, and how much data, those fibres will transport). If the fibres are damaged, Supplier is responsible for the repairs and maintenance. Supplier owns extra fibres, but can substitute those for Customer's fibres only for reasons of repairs, maintenance or malfunction (and is obliged to substitute the fibres in these cases).

The contract contains a lease of dark fibres. Customer has the right to use the three dark fibres for 15 years.

There are three identified fibres. The fibres are explicitly specified in the contract and are physically distinct from other fibres within the cable. Supplier cannot substitute the fibres other than for reasons of repairs, maintenance or malfunction (see paragraph B18).

Customer has the right to control the use of the fibres throughout the 15-year period of use because:

- (a) Customer has the right to obtain substantially all of the economic benefits from use of the fibres over the 15-year period of use. Customer has exclusive use of the fibres throughout the period of use.
- (b) Customer has the right to direct the use of the fibres because the conditions in paragraph B24(a) exist. Customer makes the relevant decisions about how and for what purpose the fibres are used by deciding (i) when and whether to light the fibres and (ii) when and how much output the fibres will produce (ie what data, and how much data, those fibres will transport). Customer has the right to change these decisions during the 15-year period of use.

Although Supplier's decisions about repairing and maintaining the fibres are essential to their efficient use, those decisions do not give Supplier the right to direct how and for what purpose the fibres are used. Consequently, Supplier does not control the use of the fibres during the period of use.

continued...

...continued

Example 3—Fibre-optic cable

Example 3B: Customer enters into a 15-year contract with Supplier for the right to use a specified amount of capacity within a cable connecting Hong Kong to Tokyo. The specified amount is equivalent to Customer having the use of the full capacity of three fibre strands within the cable (the cable contains 15 fibres with similar capacities). Supplier makes decisions about the transmission of data (ie Supplier lights the fibres, makes decisions about which fibres are used to transmit Customer's traffic and makes decisions about the electronic equipment that Supplier owns and connects to the fibres).

The contract does not contain a lease.

Supplier makes all decisions about the transmission of its customers' data, which requires the use of only a portion of the capacity of the cable for each customer. The capacity portion that will be provided to Customer is not physically distinct from the remaining capacity of the cable and does not represent substantially all of the capacity of the cable (see paragraph B20). Consequently, Customer does not have the right to use an identified asset.

Example 4—Retail unit

Customer enters into a contract with a property owner (Supplier) to use Retail Unit A for a five-year period. Retail Unit A is part of a larger retail space with many retail units.

Customer is granted the right to use Retail Unit A. Supplier can require Customer to relocate to another retail unit. In that case, Supplier is required to provide Customer with a retail unit of similar quality and specifications to Retail Unit A and to pay for Customer's relocation costs. Supplier would benefit economically from relocating Customer only if a major new tenant were to decide to occupy a large amount of retail space at a rate sufficiently favourable to cover the costs of relocating Customer and other tenants in the retail space. However, although it is possible that those circumstances will arise, at inception of the contract, it is not likely that those circumstances will arise.

The contract requires Customer to use Retail Unit A to operate its well-known store brand to sell its goods during the hours that the larger retail space is open. Customer makes all of the decisions about the use of the retail unit during the period of use. For example, Customer decides on the mix of goods sold from the unit, the pricing of the goods sold and the quantities of inventory held. Customer also controls physical access to the unit throughout the five-year period of use.

The contract requires Customer to make fixed payments to Supplier, as well as variable payments that are a percentage of sales from Retail Unit A.

Supplier provides cleaning and security services, as well as advertising services, as part of the contract.

continued...

...continued

Example 4—Retail unit

The contract contains a lease of retail space. Customer has the right to use Retail Unit A for five years.

Retail Unit A is an identified asset. It is explicitly specified in the contract. Supplier has the practical ability to substitute the retail unit, but could benefit economically from substitution only in specific circumstances. Supplier's substitution right is not substantive because, at inception of the contract, those circumstances are not considered likely to arise (see paragraph B16).

Customer has the right to control the use of Retail Unit A throughout the five-year period of use because:

- (a) Customer has the right to obtain substantially all of the economic benefits from use of Retail Unit A over the five-year period of use. Customer has exclusive use of Retail Unit A throughout the period of use. Although a portion of the cash flows derived from sales from Retail Unit A will flow from Customer to Supplier, this represents consideration that Customer pays Supplier for the right to use the retail unit. It does not prevent Customer from having the right to obtain substantially all of the economic benefits from use of Retail Unit A.
- (b) Customer has the right to direct the use of Retail Unit A because the conditions in paragraph B24(a) exist. The contractual restrictions on the goods that can be sold from Retail Unit A, and when Retail Unit A is open, define the scope of Customer's right to use Retail Unit A. Within the scope of its right of use defined in the contract, Customer makes the relevant decisions about how and for what purpose Retail Unit A is used by being able to decide, for example, the mix of products that will be sold in the retail unit and the sale price for those products. Customer has the right to change these decisions during the five-year period of use.

Although cleaning, security, and advertising services are essential to the efficient use of Retail Unit A, Supplier's decisions in this regard do not give it the right to direct how and for what purpose Retail Unit A is used. Consequently, Supplier does not control the use of Retail Unit A during the period of use and Supplier's decisions do not affect Customer's control of the use of Retail Unit A.

Example 5—Truck rental

Customer enters into a contract with Supplier for the use of a truck for one week to transport cargo from New York to San Francisco. Supplier does not have substitution rights. Only cargo specified in the contract is permitted to be transported on this truck for the period of the contract. The contract specifies a maximum distance that the truck can be driven. Customer is able to choose the details of the journey (speed, route, rest stops, etc.) within the parameters of the contract. Customer does not have the right to continue using the truck after the specified trip is complete.

The cargo to be transported, and the timing and location of pick-up in New York and delivery in San Francisco, are specified in the contract.

Customer is responsible for driving the truck from New York to San Francisco.

The contract contains a lease of a truck. Customer has the right to use the truck for the duration of the specified trip.

There is an identified asset. The truck is explicitly specified in the contract, and Supplier does not have the right to substitute the truck.

Customer has the right to control the use of the truck throughout the period of use because:

- (a) Customer has the right to obtain substantially all of the economic benefits from use of the truck over the period of use. Customer has exclusive use of the truck throughout the period of use.
- (b) Customer has the right to direct the use of the truck because the conditions in B24(b)(i) exist. How and for what purpose the truck will be used (ie the transportation of specified cargo from New York to San Francisco within a specified timeframe) is predetermined in the contract. Customer directs the use of the truck because it has the right to operate the truck (for example, speed, route, rest stops) throughout the period of use. Customer makes all of the decisions about the use of the truck that can be made during the period of use through its control of the operations of the truck.

Because the duration of the contract is one week, this lease meets the definition of a short-term lease.

Example 6—Ship

Example 6A: Customer enters into a contract with a ship owner (Supplier) for the transportation of cargo from Rotterdam to Sydney on a specified ship. The ship is explicitly specified in the contract and Supplier does not have substitution rights. The cargo will occupy substantially all of the capacity of the ship. The contract specifies the cargo to be transported on the ship and the dates of pickup and delivery.

Supplier operates and maintains the ship and is responsible for the safe passage of the cargo on board the ship. Customer is prohibited from hiring another operator for the ship or operating the ship itself during the term of the contract.

The contract does not contain a lease.

There is an identified asset. The ship is explicitly specified in the contract and Supplier does not have the right to substitute that specified ship.

Customer has the right to obtain substantially all of the economic benefits from use of the ship over the period of use. Its cargo will occupy substantially all of the capacity of the ship, thereby preventing other parties from obtaining economic benefits from use of the ship.

However, Customer does not have the right to control the use of the ship because it does not have the right to direct its use. Customer does not have the right to direct how and for what purpose the ship is used. How and for what purpose the ship will be used (ie the transportation of specified cargo from Rotterdam to Sydney within a specified timeframe) is predetermined in the contract. Customer has no right to change how and for what purpose the ship is used during the period of use. Customer has no other decision-making rights about the use of the ship during the period of use (for example, it does not have the right to operate the ship) and did not design the ship. Customer has the same rights regarding the use of the ship as if it were one of many customers transporting cargo on the ship.

Example 6B: Customer enters into a contract with Supplier for the use of a specified ship for a five-year period. The ship is explicitly specified in the contract and Supplier does not have substitution rights.

Customer decides what cargo will be transported, and whether, when and to which ports the ship will sail, throughout the five-year period of use, subject to restrictions specified in the contract. Those restrictions prevent Customer from sailing the ship into waters at a high risk of piracy or carrying hazardous materials as cargo.

Supplier operates and maintains the ship and is responsible for the safe passage of the cargo on board the ship. Customer is prohibited from hiring another operator for the ship of the contract or operating the ship itself during the term of the contract.

The contract contains a lease. Customer has the right to use the ship for five years.

There is an identified asset. The ship is explicitly specified in the contract, and Supplier does not have the right to substitute that specified ship.

continued...

...continued

Example 6—Ship	
Customer has the right to control the use of the ship throughout the five-year period of use because:	
(a)	Customer has the right to obtain substantially all of the economic benefits from use of the ship over the five-year period of use. Customer has exclusive use of the ship throughout the period of use.
(b)	Customer has the right to direct the use of the ship because the conditions in paragraph B24(a) exist. The contractual restrictions about where the ship can sail and the cargo to be transported by the ship define the scope of Customer's right to use the ship. They are protective rights that protect Supplier's investment in the ship and Supplier's personnel. Within the scope of its right of use, Customer makes the relevant decisions about how and for what purpose the ship is used throughout the five-year period of use because it decides whether, where and when the ship sails, as well as the cargo it will transport. Customer has the right to change these decisions throughout the five-year period of use.
Although the operation and maintenance of the ship are essential to its efficient use, Supplier's decisions in this regard do not give it the right to direct how and for what purpose the ship is used. Instead, Supplier's decisions are dependent upon Customer's decisions about how and for what purpose the ship is used.	

Example 7—Aircraft	
<i>Customer enters into a contract with an aircraft owner (Supplier) for the use of an explicitly specified aircraft for a two-year period. The contract details the interior and exterior specifications for the aircraft.</i>	
<i>There are contractual and legal restrictions in the contract on where the aircraft can fly. Subject to those restrictions, Customer determines where and when the aircraft will fly, and which passengers and cargo will be transported on the aircraft. Supplier is responsible for operating the aircraft, using its own crew. Customer is prohibited from hiring another operator for the aircraft or operating the aircraft itself during the term of the contract.</i>	
<i>Supplier is permitted to substitute the aircraft at any time during the two-year period and must substitute the aircraft if it is not working. Any substitute aircraft must meet the interior and exterior specifications in the contract. There are significant costs involved in outfitting an aircraft in Supplier's fleet to meet Customer's specifications.</i>	
The contract contains a lease. Customer has the right to use the aircraft for two years.	

continued...

...continued

Example 7—Aircraft

There is an identified asset. The aircraft is explicitly specified in the contract and, although Supplier can substitute the aircraft, its substitution right is not substantive because the conditions in paragraph B14(b) do not exist. Supplier's substitution right is not substantive because of the significant costs involved in outfitting another aircraft to meet the specifications required by the contract such that Supplier is not expected to benefit economically from substituting the aircraft.

Customer has the right to control the use of the aircraft throughout the two-year period of use because:

- (a) Customer has the right to obtain substantially all of the economic benefits from use of the aircraft over the two-year period of use. Customer has exclusive use of the aircraft throughout the period of use.
- (b) Customer has the right to direct the use of the aircraft because the conditions in paragraph B24(a) exist. The restrictions on where the aircraft can fly define the scope of Customer's right to use the aircraft. Within the scope of its right of use, Customer makes the relevant decisions about how and for what purpose the aircraft is used throughout the two-year period of use because it decides whether, where and when the aircraft travels as well as the passengers and cargo it will transport. Customer has the right to change these decisions throughout the two-year period of use.

Although the operation of the aircraft is essential to its efficient use, Supplier's decisions in this regard do not give it the right to direct how and for what purpose the aircraft is used. Consequently, Supplier does not control the use of the aircraft during the period of use and Supplier's decisions do not affect Customer's control of the use of the aircraft.

Example 8—Contract for shirts

Customer enters into a contract with a manufacturer (Supplier) to purchase a particular type, quality and quantity of shirts for a three-year period. The type, quality and quantity of shirts are specified in the contract.

Supplier has only one factory that can meet the needs of Customer. Supplier is unable to supply the shirts from another factory or source the shirts from a third party supplier. The capacity of the factory exceeds the output for which Customer has contracted (ie Customer has not contracted for substantially all of the capacity of the factory).

Supplier makes all decisions about the operations of the factory, including the production level at which to run the factory and which customer contracts to fulfil with the output of the factory that is not used to fulfil Customer's contract.

The contract does not contain a lease.

The factory is an identified asset. The factory is implicitly specified because Supplier can fulfil the contract only through the use of this asset.

Customer does not control the use of the factory because it does not have the right to obtain substantially all of the economic benefits from use of the factory. This is because Supplier could decide to use the factory to fulfil other customer contracts during the period of use.

Customer also does not control the use of the factory because it does not have the right to direct the use of the factory. Customer does not have the right to direct how and for what purpose the factory is used during the three-year period of use. Customer's rights are limited to specifying output from the factory in the contract with Supplier. Customer has the same rights regarding the use of the factory as other customers purchasing shirts from the factory. Supplier has the right to direct the use of the factory because Supplier can decide how and for what purpose the factory is used (ie Supplier has the right to decide the production level at which to run the factory and which customer contracts to fulfil with the output produced).

Either the fact that Customer does not have the right to obtain substantially all of the economic benefits from use of the factory, or that Customer does not have the right to direct the use of the factory, would be sufficient in isolation to conclude that Customer does not control the use of the factory.

Example 9—Contract for energy/power

Example 9A: a utility company (Customer) enters into a contract with a power company (Supplier) to purchase all of the electricity produced by a new solar farm for 20 years. The solar farm is explicitly specified in the contract and Supplier has no substitution rights. The solar farm is owned by Supplier and the energy cannot be provided to Customer from another asset. Customer designed the solar farm before it was constructed—Customer hired experts in solar energy to assist in determining the location of the farm and the engineering of the equipment to be used. Supplier is responsible for building the solar farm to Customer's specifications, and then operating and maintaining it. There are no decisions to be made about whether, when or how much electricity will be produced because the design of the asset has predetermined those decisions. Supplier will receive tax credits relating to the construction and ownership of the solar farm, while Customer receives renewable energy credits that accrue from use of the solar farm.

The contract contains a lease. Customer has the right to use the solar farm for 20 years.

There is an identified asset because the solar farm is explicitly specified in the contract, and Supplier does not have the right to substitute the specified solar farm.

Customer has the right to control the use of the solar farm throughout the 20-year period of use because:

- (a) Customer has the right to obtain substantially all of the economic benefits from use of the solar farm over the 20-year period of use. Customer has exclusive use of the solar farm; it takes all of the electricity produced by the farm over the 20-year period of use as well as the renewable energy credits that are a by-product from use of the solar farm. Although Supplier will receive economic benefits from the solar farm in the form of tax credits, those economic benefits relate to the ownership of the solar farm rather than the use of the solar farm and, thus, are not considered in this assessment.
- (b) Customer has the right to direct the use of the solar farm because the conditions in paragraph B24(b)(ii) exist. Neither Customer, nor Supplier, decides how and for what purpose the solar farm is used during the period of use because those decisions are predetermined by the design of the asset (ie the design of the solar farm has, in effect, programmed into the asset any relevant decision-making rights about how and for what purpose the solar farm is used throughout the period of use). Customer does not operate the solar farm; Supplier makes the decisions about the operation of the solar farm. However, Customer's design of the solar farm has given it the right to direct the use of the farm. Because the design of the solar farm has predetermined how and for what purpose the asset will be used throughout the period of use, Customer's control over that design is substantively no different from Customer controlling those decisions.

continued...

...continued

Example 9—Contract for energy/power
<p><i>Example 9B: Customer enters into a contract with Supplier to purchase all of the power produced by an explicitly specified power plant for three years. The power plant is owned and operated by Supplier. Supplier is unable to provide power to Customer from another plant. The contract sets out the quantity and timing of power that the power plant will produce throughout the period of use, which cannot be changed in the absence of extraordinary circumstances (for example, emergency situations). Supplier operates and maintains the plant on a daily basis in accordance with industry-approved operating practices. Supplier designed the power plant when it was constructed some years before entering into the contract with Customer—Customer had no involvement in that design.</i></p> <p>The contract does not contain a lease.</p> <p>There is an identified asset because the power plant is explicitly specified in the contract, and Supplier does not have the right to substitute the specified plant.</p> <p>Customer has the right to obtain substantially all of the economic benefits from use of the identified power plant over the three-year period of use. Customer will take all of the power produced by the power plant over the three-year period of use.</p> <p>However, Customer does not have the right to control the use of the power plant because it does not have the right to direct its use. Customer does not have the right to direct how and for what purpose the plant is used. How and for what purpose the plant is used (ie whether, when and how much power the plant will produce) is predetermined in the contract. Customer has no right to change how and for what purpose the plant is used during the period of use. Customer has no other decision-making rights about the use of the power plant during the period of use (for example, it does not operate the power plant) and did not design the plant. Supplier is the only party that can make decisions about the plant during the period of use by making the decisions about how the plant is operated and maintained. Customer has the same rights regarding the use of the plant as if it were one of many customers obtaining power from the plant.</p>

continued...

...continued

Example 9—Contract for energy/power

Example 9C: Customer enters into a contract with Supplier to purchase all of the power produced by an explicitly specified power plant for 10 years. The contract states that Customer has rights to all of the power produced by the plant (ie Supplier cannot use the plant to fulfil other contracts).

Customer issues instructions to Supplier about the quantity and timing of the delivery of power. If the plant is not producing power for Customer, it does not operate.

Supplier operates and maintains the plant on a daily basis in accordance with industry-approved operating practices.

The contract contains a lease. Customer has the right to use the power plant for 10 years.

There is an identified asset. The power plant is explicitly specified in the contract and Supplier does not have the right to substitute the specified plant.

Customer has the right to control the use of the power plant throughout the 10-year period of use because:

- (a) Customer has the right to obtain substantially all of the economic benefits from use of the power plant over the 10-year period of use. Customer has exclusive use of the power plant; it has rights to all of the power produced by the power plant throughout the 10-year period of use.
- (b) Customer has the right to direct the use of the power plant because the conditions in paragraph B24(a) exist. Customer makes the relevant decisions about how and for what purpose the power plant is used because it has the right to determine whether, when and how much power the plant will produce (ie the timing and quantity, if any, of power produced) throughout the period of use. Because Supplier is prevented from using the power plant for another purpose, Customer's decision-making about the timing and quantity of power produced, in effect, determines when, and whether, the plant produces output.

Although the operation and maintenance of the power plant are essential to its efficient use, Supplier's decisions in this regard do not give it the right to direct how and for what purpose the power plant is used. Consequently, Supplier does not control the use of the power plant during the period of use. Instead, Supplier's decisions are dependent upon Customer's decisions about how and for what purpose the power plant is used.

Example 10—Contract for network services

Example 10A: Customer enters into a contract with a telecommunications company (Supplier) for network services for two years. The contract requires Supplier to supply network services that meet a specified quality level. In order to provide the services, Supplier installs and configures servers at Customer's premises—Supplier determines the speed and quality of data transportation in the network using the servers. Supplier can reconfigure or replace the servers when needed to continuously provide the quality of network services defined in the contract. Customer does not operate the servers or make any significant decisions about their use.

The contract does not contain a lease. Instead, the contract is a service contract in which Supplier uses the equipment to meet the level of network services determined by Customer.

There is no need to assess whether the servers installed at Customer's premises are identified assets. This assessment would not change the analysis of whether the contract contains a lease because Customer does not have the right to control the use of the servers.

Customer does not control the use of the servers because Customer's only decision-making rights relate to deciding upon the level of network services (the output of the servers) before the period of use—the level of network services cannot be changed during the period of use without modifying the contract. For example, even though Customer produces the data to be transported, that activity does not directly affect the configuration of the network services and, thus, it does not affect how and for what purpose the servers are used.

Supplier is the only party that can make relevant decisions about the use of the servers during the period of use. Supplier has the right to decide how data is transported using the servers, whether to reconfigure the servers and whether to use the servers for another purpose. Accordingly, Supplier controls the use of the servers in providing network services to Customer.

continued...

...continued

Example 10—Contract for network services

Example 10B: Customer enters into a contract with an information technology company (Supplier) for the use of an identified server for three years. Supplier delivers and installs the server at Customer's premises in accordance with Customer's instructions, and provides repair and maintenance services for the server, as needed, throughout the period of use. Supplier substitutes the server only in the case of malfunction. Customer decides which data to store on the server and how to integrate the server within its operations. Customer can change its decisions in this regard throughout the period of use.

The contract contains a lease. Customer has the right to use the server for three years.

There is an identified asset. The server is explicitly specified in the contract. Supplier can substitute the server only if it is malfunctioning (see paragraph B18).

Customer has the right to control the use of the server throughout the three-year period of use because:

- (a) Customer has the right to obtain substantially all of the economic benefits from use of the server over the three-year period of use. Customer has exclusive use of the server throughout the period of use.
- (b) Customer has the right to direct the use of the server (because the conditions in paragraph B24(a) exist). Customer makes the relevant decisions about how and for what purpose the server is used because it has the right to decide which aspect of its operations the server is used to support and which data it stores on the server. Customer is the only party that can make decisions about the use of the server during the period of use.

Leases of low-value assets and portfolio application (paragraphs 5–6, B1 and B3–B8)

IE3 The following example illustrates how a lessee might (a) apply paragraphs B3–B8 of IFRS 16 to leases of low-value assets; and (b) determine portfolios of leases to which it would apply the requirements in IFRS 16.

Example 11—Leases of low-value assets and portfolio application

A lessee in the pharmaceutical manufacturing and distribution industry (Lessee) has the following leases:

- (a) leases of real estate (both office buildings and warehouses).
- (b) leases of manufacturing equipment.
- (c) leases of company cars, both for sales personnel and senior management and of varying quality, specification and value.
- (d) leases of trucks and vans used for delivery purposes, of varying size and value.
- (e) leases of IT equipment for use by individual employees (such as laptop computers, desktop computers, hand held computer devices, desktop printers and mobile phones).
- (f) leases of servers, including many individual modules that increase the storage capacity of those servers. The modules have been added to the mainframe servers over time as Lessee has needed to increase the storage capacity of the servers.
- (g) leases of office equipment:
 - (i) office furniture (such as chairs, desks and office partitions);
 - (ii) water dispensers; and
 - (iii) high-capacity multifunction photocopier devices.

Leases of low-value assets

Lessee determines that the following leases qualify as leases of low-value assets on the basis that the underlying assets, when new, are individually of low value:

- (a) leases of IT equipment for use by individual employees; and
- (b) leases of office furniture and water dispensers.

Lessee elects to apply the requirements in paragraph 6 of IFRS 16 in accounting for all of those leases.

Although each module within the servers, if considered individually, might be an asset of low value, the leases of modules within the servers do not qualify as leases of low-value assets. This is because each module is highly interrelated with other parts of the servers. Lessee would not lease the modules without also leasing the servers.

continued...

...continued

Example 11—Leases of low-value assets and portfolio applicationPortfolio application

As a result, Lessee applies the recognition and measurement requirements in IFRS 16 to its leases of real estate, manufacturing equipment, company cars, trucks and vans, servers and high-capacity multifunction photocopier devices. In doing so, Lessee groups its company cars, trucks and vans into portfolios.

Lessee's company cars are leased under a series of master lease agreements. Lessee uses eight different types of company car, which vary by price and are assigned to staff on the basis of seniority and territory. Lessee has a master lease agreement for each different type of company car. The individual leases within each master lease agreement are all similar (including similar start and end dates), but the terms and conditions generally vary from one master lease agreement to another. Because the individual leases within each master lease agreement are similar to each other, Lessee reasonably expects that applying the requirements of IFRS 16 to each master lease agreement would not result in a materially different effect than applying the requirements of IFRS 16 to each individual lease within the master lease agreement. Consequently, Lessee concludes that it can apply the requirements of IFRS 16 to each master lease agreement as a portfolio. In addition, Lessee concludes that two of the eight master lease agreements are similar and cover substantially similar types of company cars in similar territories. Lessee reasonably expects that the effect of applying IFRS 16 to the combined portfolio of leases within the two master lease agreements would not differ materially from applying IFRS 16 to each lease within that combined portfolio. Lessee, therefore, concludes that it can further combine those two master lease agreements into a single lease portfolio.

Lessee's trucks and vans are leased under individual lease agreements. There are 6,500 leases in total. All of the truck leases have similar terms, as do all of the van leases. The truck leases are generally for four years and involve similar models of truck. The van leases are generally for five years and involve similar models of van. Lessee reasonably expects that applying the requirements of IFRS 16 to portfolios of truck leases and van leases, grouped by type of underlying asset, territory and the quarter of the year within which the lease was entered into, would not result in a materially different effect from applying those requirements to each individual truck or van lease. Consequently, Lessee applies the requirements of IFRS 16 to different portfolios of truck and van leases, rather than to 6,500 individual leases.

Allocating consideration to components of a contract (paragraphs 12–16 and B32–B33)

IE4 The following example illustrates the allocation of consideration in a contract to lease and non-lease components by a lessee.

Example 12—Lessee allocation of consideration to lease and non-lease components of a contract

Lessor leases a bulldozer, a truck and a long-reach excavator to Lessee to be used in Lessee's mining operations for four years. Lessor also agrees to maintain each item of equipment throughout the lease term. The total consideration in the contract is CU600,000^(a), payable in annual instalments of CU150,000, and a variable amount that depends on the hours of work performed in maintaining the long-reach excavator. The variable payment is capped at 2 per cent of the replacement cost of the long-reach excavator. The consideration includes the cost of maintenance services for each item of equipment.

Lessee accounts for the non-lease components (maintenance services) separately from each lease of equipment applying paragraph 12 of IFRS 16. Lessee does not elect the practical expedient in paragraph 15 of IFRS 16. Lessee considers the requirements in paragraph B32 of IFRS 16 and concludes that the lease of the bulldozer, the lease of the truck and the lease of the long-reach excavator are each separate lease components. This is because:

- (a) Lessee can benefit from use of each of the three items of equipment on its own or together with other readily available resources (for example, Lessee could readily lease or purchase an alternative truck or excavator to use in its operations); and
- (b) although Lessee is leasing all three items of equipment for one purpose (ie to engage in mining operations), the machines are neither highly dependent on, nor highly interrelated with, each other. Lessee's ability to derive benefit from the lease of each item of equipment is not significantly affected by its decision to lease, or not lease, the other equipment from Lessor.

Consequently, Lessee concludes that there are three lease components and three non-lease components (maintenance services) in the contract. Lessee applies the guidance in paragraphs 13–14 of IFRS 16 to allocate the consideration in the contract to the three lease components and the non-lease components.

continued...

...continued

Example 12—Lessee allocation of consideration to lease and non-lease components of a contract

Several suppliers provide maintenance services for a similar bulldozer and a similar truck. Accordingly, there are observable standalone prices for the maintenance services for those two items of leased equipment. Lessee is able to establish observable stand-alone prices for the maintenance of the bulldozer and the truck of CU32,000 and CU16,000, respectively, assuming similar payment terms to those in the contract with Lessor. The long-reach excavator is highly specialised and, accordingly, other suppliers do not lease or provide maintenance services for similar excavators. Nonetheless, Lessor provides four-year maintenance service contracts to customers that purchase similar long-reach excavators from Lessor. The observable consideration for those four-year maintenance service contracts is a fixed amount of CU56,000, payable over four years, and a variable amount that depends on the hours of work performed in maintaining the long-reach excavator. That variable payment is capped at 2 per cent of the replacement cost of the long-reach excavator. Consequently, Lessee estimates the stand-alone price of the maintenance services for the long-reach excavator to be CU56,000 plus any variable amounts. Lessee is able to establish observable stand-alone prices for the leases of the bulldozer, the truck and the long-reach excavator of CU170,000, CU102,000 and CU224,000, respectively.

Lessee allocates the fixed consideration in the contract (CU600,000) to the lease and non-lease components as follows:

CU	Bulldozer	Truck	Long-reach excavator	Total
Lease	170,000	102,000	224,000	496,000
Non-lease				104,000
Total fixed consideration				600,000

Lessee allocates all of the variable consideration to the maintenance of the long-reach excavator, and, thus, to the non-lease components of the contract. Lessee then accounts for each lease component applying the guidance in IFRS 16, treating the allocated consideration as the lease payments for each lease component.

(a) In these Illustrative Examples, currency amounts are denominated in 'currency units' (CU).

Lessee measurement (paragraphs 18–41 and B34–B41)

IE5 The following example illustrates how a lessee measures right-of-use assets and lease liabilities. It also illustrates how a lessee accounts for a change in the lease term.

Example 13—Measurement by a lessee and accounting for a change in the lease term*Part 1—Initial measurement of the right-of-use asset and the lease liability*

Lessee enters into a 10-year lease of a floor of a building, with an option to extend for five years. Lease payments are CU50,000 per year during the initial term and CU55,000 per year during the optional period, all payable at the beginning of each year. To obtain the lease, Lessee incurs initial direct costs of CU20,000, of which CU15,000 relates to a payment to a former tenant occupying that floor of the building and CU5,000 relates to a commission paid to the real estate agent that arranged the lease. As an incentive to Lessee for entering into the lease, Lessor agrees to reimburse to Lessee the real estate commission of CU5,000 and Lessee's leasehold improvements of CU7,000.

At the commencement date, Lessee concludes that it is not reasonably certain to exercise the option to extend the lease and, therefore, determines that the lease term is 10 years.

The interest rate implicit in the lease is not readily determinable. Lessee's incremental borrowing rate is 5 per cent per annum, which reflects the fixed rate at which Lessee could borrow an amount similar to the value of the right-of-use asset, in the same currency, for a 10-year term, and with similar collateral.

At the commencement date, Lessee makes the lease payment for the first year, incurs initial direct costs, receives lease incentives from Lessor and measures the lease liability at the present value of the remaining nine payments of CU50,000, discounted at the interest rate of 5 per cent per annum, which is CU355,391.

Lessee initially recognises assets and liabilities in relation to the lease as follows.

Right-of-use asset	CU405,391	
Lease liability		CU355,391
Cash (lease payment for the first year)		CU50,000
Right-of-use asset	CU20,000	
Cash (initial direct costs)		CU20,000
Cash (lease incentive)	CU5,000	
Right-of-use asset		CU5,000

Lessee accounts for the reimbursement of leasehold improvements from Lessor applying other relevant Standards and not as a lease incentive applying IFRS 16. This is because costs incurred on leasehold improvements by Lessee are not included within the cost of the right-of-use asset.

continued...

...continued

Example 13—Measurement by a lessee and accounting for a change in the lease term*Part 2—Subsequent measurement and accounting for a change in the lease term*

In the sixth year of the lease, Lessee acquires Entity A. Entity A has been leasing a floor in another building. The lease entered into by Entity A contains a termination option that is exercisable by Entity A. Following the acquisition of Entity A, Lessee needs two floors in a building suitable for the increased workforce. To minimise costs, Lessee (a) enters into a separate eight-year lease of another floor in the building leased that will be available for use at the end of Year 7 and (b) terminates early the lease entered into by Entity A with effect from the beginning of Year 8.

Moving Entity A's staff to the same building occupied by Lessee creates an economic incentive for Lessee to extend its original lease at the end of the non-cancellable period of 10 years. The acquisition of Entity A and the relocation of Entity A's staff is a significant event that is within the control of Lessee and affects whether Lessee is reasonably certain to exercise the extension option not previously included in its determination of the lease term. This is because the original floor has greater utility (and thus provides greater benefits) to Lessee than alternative assets that could be leased for a similar amount to the lease payments for the optional period—Lessee would incur additional costs if it were to lease a similar floor in a different building because the workforce would be located in different buildings. Consequently, at the end of Year 6, Lessee concludes that it is now reasonably certain to exercise the option to extend its original lease as a result of its acquisition and planned relocation of Entity A.

Lessee's incremental borrowing rate at the end of Year 6 is 6 per cent per annum, which reflects the fixed rate at which Lessee could borrow an amount similar to the value of the right-of-use asset, in the same currency, for a nine-year term, and with similar collateral. Lessee expects to consume the right-of-use asset's future economic benefits evenly over the lease term and, thus, depreciates the right-of-use asset on a straight-line basis.

continued...

...continued

Example 13—Measurement by a lessee and accounting for a change in the lease term								
The right-of-use asset and the lease liability from Year 1 to Year 6 are as follows.								
Year	Lease liability				Right-of-use asset			
	Beginning balance	Lease payment	5% interest expense	Ending balance	Beginning balance	Depreciation charge	Ending balance	
	CU	CU	CU	CU	CU	CU	CU	CU
1	355,391	-	17,770	373,161	420,391	(42,039)	378,352	
2	373,161	(50,000)	16,158	339,319	378,352	(42,039)	336,313	
3	339,319	(50,000)	14,466	303,785	336,313	(42,039)	294,274	
4	303,785	(50,000)	12,689	266,474	294,274	(42,039)	252,235	
5	266,474	(50,000)	10,823	227,297	252,235	(42,039)	210,196	
6	227,297	(50,000)	8,865	186,162	210,196	(42,039)	168,157	

At the end of the sixth year, before accounting for the change in the lease term, the lease liability is CU186,162 (the present value of four remaining payments of CU50,000, discounted at the original interest rate of 5 per cent per annum). Interest expense of CU8,865 is recognised in Year 6. Lessee's right-of-use asset is CU168,157.

Lessee remeasures the lease liability at the present value of four payments of CU50,000 followed by five payments of CU55,000, all discounted at the revised discount rate of 6 per cent per annum, which is CU378,174. Lessee increases the lease liability by CU192,012, which represents the difference between the remeasured liability of CU378,174 and its previous carrying amount of CU186,162. The corresponding adjustment is made to the right-of-use asset to reflect the cost of the additional right of use, recognised as follows.

Right-of-use asset	CU192,012
Lease liability	CU192,012

Following the remeasurement, the carrying amount of Lessee's right-of-use asset is CU360,169 (ie CU168,157 + CU192,012). From the beginning of Year 7 Lessee calculates the interest expense on the lease liability at the revised discount rate of 6 per cent per annum.

continued...

...continued

Example 13—Measurement by a lessee and accounting for a change in the lease term							
The right-of-use asset and the lease liability from Year 7 to Year 15 are as follows.							
Year	Lease liability				Right-of-use asset		
	Beginning balance	Lease payment	6% interest expense	Ending balance	Beginning balance	Depreciation charge	Ending balance
	CU	CU	CU	CU	CU	CU	CU
7	378,174	(50,000)	19,690	347,864	360,169	(40,019)	320,150
8	347,864	(50,000)	17,872	315,736	320,150	(40,019)	280,131
9	315,736	(50,000)	15,944	281,680	280,131	(40,019)	240,112
10	281,680	(50,000)	13,901	245,581	240,112	(40,019)	200,093
11	245,581	(55,000)	11,435	202,016	200,093	(40,019)	160,074
12	202,016	(55,000)	8,821	155,837	160,074	(40,019)	120,055
13	155,837	(55,000)	6,050	106,887	120,055	(40,019)	80,036
14	106,887	(55,000)	3,113	55,000	80,036	(40,018)	40,018
15	55,000	(55,000)	-	-	40,018	(40,018)	-

Variable lease payments (paragraphs 27, 39, 42(b) and 43)

IE6 The following example illustrates how a lessee accounts for variable lease payments that depend on an index and variable lease payments not included in the measurement of the lease liability.

Example 14—Variable lease payments dependent on an index and variable lease payments linked to sales

Example 14A—Lessee enters into a 10-year lease of property with annual lease payments of CU50,000, payable at the beginning of each year. The contract specifies that lease payments will increase every two years on the basis of the increase in the Consumer Price Index for the preceding 24 months. The Consumer Price Index at the commencement date is 125. This example ignores any initial direct costs. The rate implicit in the lease is not readily determinable. Lessee's incremental borrowing rate is 5 per cent per annum, which reflects the fixed rate at which Lessee could borrow an amount similar to the value of the right-of-use asset, in the same currency, for a 10-year term, and with similar collateral.

continued...

...continued

Example 14—Variable lease payments dependent on an index and variable lease payments linked to sales		
At the commencement date, Lessee makes the lease payment for the first year and measures the lease liability at the present value of the remaining nine payments of CU50,000, discounted at the interest rate of 5 per cent per annum, which is CU355,391.		
Lessee initially recognises assets and liabilities in relation to the lease as follows.		
Right-of-use asset	CU405,391	
Lease liability		CU355,391
Cash (lease payment for the first year)		CU50,000
<i>Lessee expects to consume the right-of-use asset's future economic benefits evenly over the lease term and, thus, depreciates the right-of-use asset on a straight-line basis.</i>		
During the first two years of the lease, Lessee recognises in aggregate the following related to the lease.		
Interest expense	CU33,928	
Lease liability		CU33,928
Depreciation charge	CU81,078 (CU405,391 ÷ 10 × 2 years)	
Right-of-use asset		CU81,078
At the beginning of the second year, Lessee makes the lease payment for the second year and recognises the following.		
Lease liability	CU50,000	
Cash		CU50,000
At the beginning of the third year, before accounting for the change in future lease payments resulting from a change in the Consumer Price Index and making the lease payment for the third year, the lease liability is CU339,319 (the present value of eight payments of CU50,000 discounted at the interest rate of 5 per cent per annum = CU355,391 + CU33,928 – CU50,000).		
<i>At the beginning of the third year of the lease the Consumer Price Index is 135.</i>		
The payment for the third year, adjusted for the Consumer Price Index, is CU54,000 (CU50,000 × 135 ÷ 125). Because there is a change in the future lease payments resulting from a change in the Consumer Price Index used to determine those payments, Lessee remeasures the lease liability to reflect those revised lease payments, ie the lease liability now reflects eight annual lease payments of CU54,000.		

continued...

...continued

Example 14—Variable lease payments dependent on an index and variable lease payments linked to sales

At the beginning of the third year, Lessee remeasures the lease liability at the present value of eight payments of CU54,000 discounted at an unchanged discount rate of 5 per cent per annum, which is CU366,464. Lessee increases the lease liability by CU27,145, which represents the difference between the remeasured liability of CU366,464 and its previous carrying amount of CU339,319. The corresponding adjustment is made to the right-of-use asset, recognised as follows.

Right-of-use asset	CU27,145	
Lease liability		CU27,145

At the beginning of the third year, Lessee makes the lease payment for the third year and recognises the following.

Lease liability	CU54,000	
Cash		CU54,000

Example 14B—Assume the same facts as Example 14A except that Lessee is also required to make variable lease payments for each year of the lease, which are determined as 1 per cent of Lessee's sales generated from the leased property.

At the commencement date, Lessee measures the right-of-use asset and the lease liability recognised at the same amounts as in Example 14A. This is because the additional variable lease payments are linked to future sales and, thus, do not meet the definition of lease payments. Consequently, those payments are not included in the measurement of the asset and liability.

Right-of-use asset	CU405,391	
Lease liability		CU355,391
Cash (lease payment for the first year)		CU50,000

Lessee prepares financial statements on an annual basis. During the first year of the lease, Lessee generates sales of CU800,000 from the leased property.

Lessee incurs an additional expense related to the lease of CU8,000 (CU800,000 × 1 per cent), which Lessee recognises in profit or loss in the first year of the lease.

Lease modifications (paragraphs 44–46)

IE7 Examples 15–19 illustrate the requirements of IFRS 16 regarding lease modifications for a lessee.

Example 15—Modification that is a separate lease

Lessee enters into a 10-year lease for 2,000 square metres of office space. At the beginning of Year 6, Lessee and Lessor agree to amend the original lease for the remaining five years to include an additional 3,000 square metres of office space in the same building. The additional space is made available for use by Lessee at the end of the second quarter of Year 6. The increase in total consideration for the lease is commensurate with the current market rate for the new 3,000 square metres of office space, adjusted for the discount that Lessee receives reflecting that Lessor does not incur costs that it would otherwise have incurred if leasing the same space to a new tenant (for example, marketing costs).

Lessee accounts for the modification as a separate lease, separate from the original 10-year lease. This is because the modification grants Lessee an additional right to use an underlying asset, and the increase in consideration for the lease is commensurate with the stand-alone price of the additional right-of-use adjusted to reflect the circumstances of the contract. In this example, the additional underlying asset is the new 3,000 square metres of office space. Accordingly, at the commencement date of the new lease (at the end of the second quarter of Year 6), Lessee recognises a right-of-use asset and a lease liability relating to the lease of the additional 3,000 square metres of office space. Lessee does not make any adjustments to the accounting for the original lease of 2,000 square metres of office space as a result of this modification.

Example 16—Modification that increases the scope of the lease by extending the contractual lease term

Lessee enters into a 10-year lease for 5,000 square metres of office space. The annual lease payments are CU100,000 payable at the end of each year. The interest rate implicit in the lease cannot be readily determined. Lessee's incremental borrowing rate at the commencement date is 6 per cent per annum. At the beginning of Year 7, Lessee and Lessor agree to amend the original lease by extending the contractual lease term by four years. The annual lease payments are unchanged (ie CU100,000 payable at the end of each year from Year 7 to Year 14). Lessee's incremental borrowing rate at the beginning of Year 7 is 7 per cent per annum.

At the effective date of the modification (at the beginning of Year 7), Lessee remeasures the lease liability based on: (a) an eight-year remaining lease term, (b) annual payments of CU100,000 and (c) Lessee's incremental borrowing rate of 7 per cent per annum. The modified lease liability equals CU597,130. The lease liability immediately before the modification (including the recognition of the interest expense until the end of Year 6) is CU346,511. Lessee recognises the difference between the carrying amount of the modified lease liability and the carrying amount of the lease liability immediately before the modification (CU250,619) as an adjustment to the right-of-use asset.

Example 17—Modification that decreases the scope of the lease

Lessee enters into a 10-year lease for 5,000 square metres of office space. The annual lease payments are CU50,000 payable at the end of each year. The interest rate implicit in the lease cannot be readily determined. Lessee's incremental borrowing rate at the commencement date is 6 per cent per annum. At the beginning of Year 6, Lessee and Lessor agree to amend the original lease to reduce the space to only 2,500 square metres of the original space starting from the end of the first quarter of Year 6. The annual fixed lease payments (from Year 6 to Year 10) are CU30,000. Lessee's incremental borrowing rate at the beginning of Year 6 is 5 per cent per annum.

At the effective date of the modification (at the beginning of Year 6), Lessee remeasures the lease liability based on: (a) a five-year remaining lease term, (b) annual payments of CU30,000 and (c) Lessee's incremental borrowing rate of 5 per cent per annum. This equals CU129,884.

Lessee determines the proportionate decrease in the carrying amount of the right-of-use asset on the basis of the remaining right-of-use asset (ie 2,500 square metres corresponding to 50 per cent of the original right-of-use asset).

50 per cent of the pre-modification right-of-use asset (CU184,002) is CU92,001. Fifty per cent of the pre-modification lease liability (CU210,618) is CU105,309. Consequently, Lessee reduces the carrying amount of the right-of-use asset by CU92,001 and the carrying amount of the lease liability by CU105,309.

Lessee recognises the difference between the decrease in the lease liability and the decrease in the right-of-use asset ($CU105,309 - CU92,001 = CU13,308$) as a gain in profit or loss at the effective date of the modification (at the beginning of Year 6).

Lessee recognises the difference between the remaining lease liability of CU105,309 and the modified lease liability of CU129,884 (which equals CU24,575) as an adjustment to the right-of-use asset reflecting the change in the consideration paid for the lease and the revised discount rate.

Example 18—Modification that both increases and decreases the scope of the lease

Lessee enters into a 10-year lease for 2,000 square metres of office space. The annual lease payments are CU100,000 payable at the end of each year. The interest rate implicit in the lease cannot be readily determined. Lessee's incremental borrowing rate at the commencement date is 6 per cent per annum. At the beginning of Year 6, Lessee and Lessor agree to amend the original lease to (a) include an additional 1,500 square metres of space in the same building starting from the beginning of Year 6 and (b) reduce the lease term from 10 years to eight years. The annual fixed payment for the 3,500 square metres is CU150,000 payable at the end of each year (from Year 6 to Year 8). Lessee's incremental borrowing rate at the beginning of Year 6 is 7 per cent per annum.

continued...

...continued

Example 18—Modification that both increases and decreases the scope of the lease

The consideration for the increase in scope of 1,500 square metres of space is not commensurate with the stand-alone price for that increase adjusted to reflect the circumstances of the contract. Consequently, Lessee does not account for the increase in scope that adds the right to use an additional 1,500 square metres of space as a separate lease.

The pre-modification right-of-use asset and the pre-modification lease liability in relation to the lease are as follows.

Year	Lease liability				Right-of-use asset		
	Beginning balance	6% interest expense	Lease payment	Ending balance	Beginning balance	Depreciation charge	Ending balance
	CU	CU	CU	CU	CU	CU	CU
1	736,009	44,160	(100,000)	680,169	736,009	(73,601)	662,408
2	680,169	40,810	(100,000)	620,979	662,408	(73,601)	588,807
3	620,979	37,259	(100,000)	558,238	588,807	(73,601)	515,206
4	558,238	33,494	(100,000)	491,732	515,206	(73,601)	441,605
5	491,732	29,504	(100,000)	421,236	441,605	(73,601)	368,004
6	421,236				368,004		

At the effective date of the modification (at the beginning of Year 6), Lessee remeasures the lease liability on the basis of: (a) a three-year remaining lease term, (b) annual payments of CU150,000 and (c) Lessee's incremental borrowing rate of 7 per cent per annum. The modified liability equals CU393,647, of which (a) CU131,216 relates to the increase of CU50,000 in the annual lease payments from Year 6 to Year 8 and (b) CU262,431 relates to the remaining three annual lease payments of CU100,000 from Year 6 to Year 8.

Decrease in the lease term

At the effective date of the modification (at the beginning of Year 6), the pre-modification right-of-use asset is CU368,004. Lessee determines the proportionate decrease in the carrying amount of the right-of-use asset based on the remaining right-of-use asset for the original 2,000 square metres of office space (ie a remaining three-year lease term rather than the original five-year lease term). The remaining right-of-use asset for the original 2,000 square metres of office space is CU220,802 (ie $CU368,004 \div 5 \times 3$ years).

At the effective date of the modification (at the beginning of Year 6), the pre-modification lease liability is CU421,236. The remaining lease liability for the original 2,000 square metres of office space is CU267,301 (ie present value of three annual lease payments of CU100,000, discounted at the original discount rate of 6 per cent per annum).

continued...

...continued

Example 18—Modification that both increases and decreases the scope of the lease

Consequently, Lessee reduces the carrying amount of the right-of-use asset by CU147,202 (CU368,004 – CU220,802), and the carrying amount of the lease liability by CU153,935 (CU421,236 – CU267,301). Lessee recognises the difference between the decrease in the lease liability and the decrease in the right-of-use asset (CU153,935 – CU147,202 = CU6,733) as a gain in profit or loss at the effective date of the modification (at the beginning of Year 6).

Lease liability	CU153,935
Right-of-use asset	CU147,202
Gain	CU6,733

At the effective date of the modification (at the beginning of Year 6), Lessee recognises the effect of the remeasurement of the remaining lease liability reflecting the revised discount rate of 7 per cent per annum, which is CU4,870 (CU267,301 – CU262,431), as an adjustment to the right-of-use asset.

Lease liability	CU4,870
Right-of-use asset	CU4,870

Increase in the leased space

At the commencement date of the lease for the additional 1,500 square metres of space (at the beginning of Year 6), Lessee recognises the increase in the lease liability related to the increase in scope of CU131,216 (ie present value of three annual lease payments of CU50,000, discounted at the revised interest rate of 7 per cent per annum) as an adjustment to the right-of-use asset.

Right-of-use asset	CU131,216
Lease liability	CU131,216

The modified right-of-use asset and the modified lease liability in relation to the modified lease are as follows.

Year	Lease liability				Right-of-use asset		
	Beginning balance	7% interest expense	Lease payment	Ending balance	Beginning balance	Depreciation charge	Ending balance
	CU	CU	CU	CU	CU	CU	CU
6	393,647	27,556	(150,000)	271,203	347,148	(115,716)	231,432
7	271,203	18,984	(150,000)	140,187	231,432	(115,716)	115,716
8	140,187	9,813	(150,000)	-	115,716	(115,716)	-

Example 19—Modification that is a change in consideration only

Lessee enters into a 10-year lease for 5,000 square metres of office space. At the beginning of Year 6, Lessee and Lessor agree to amend the original lease for the remaining five years to reduce the lease payments from CU100,000 per year to CU95,000 per year. The interest rate implicit in the lease cannot be readily determined. Lessee's incremental borrowing rate at the commencement date is 6 per cent per annum. Lessee's incremental borrowing rate at the beginning of Year 6 is 7 per cent per annum. The annual lease payments are payable at the end of each year.

At the effective date of the modification (at the beginning of Year 6), Lessee remeasures the lease liability based on: (a) a five-year remaining lease term, (b) annual payments of CU95,000 and (c) Lessee's incremental borrowing rate of 7 per cent per annum. Lessee recognises the difference between the carrying amount of the modified liability (CU389,519) and the lease liability immediately before the modification (CU421,236) of CU31,717 as an adjustment to the right-of-use asset.

Subleases (paragraph B58)

- IE8 Examples 20–21 illustrate the application of the requirements in IFRS 16 for an intermediate lessor that enters into a head lease and a sublease of the same underlying asset.

Example 20—Sublease classified as a finance lease

Head lease—An intermediate lessor enters into a five-year lease for 5,000 square metres of office space (the head lease) with Entity A (the head lessor).

Sublease—At the beginning of Year 3, the intermediate lessor subleases the 5,000 square metres of office space for the remaining three years of the head lease to a sublessee.

The intermediate lessor classifies the sublease by reference to the right-of-use asset arising from the head lease. The intermediate lessor classifies the sublease as a finance lease, having considered the requirements in paragraphs 61–66 of IFRS 16.

continued...

...continued

Example 20—Sublease classified as a finance lease

When the intermediate lessor enters into the sublease, the intermediate lessor:

- (a) derecognises the right-of-use asset relating to the head lease that it transfers to the sublessee and recognises the net investment in the sublease;
- (b) recognises any difference between the right-of-use asset and the net investment in the sublease in profit or loss; and
- (c) retains the lease liability relating to the head lease in its statement of financial position, which represents the lease payments owed to the head lessor.

During the term of the sublease, the intermediate lessor recognises both finance income on the sublease and interest expense on the head lease.

Example 21—Sublease classified as an operating lease

Head lease—An intermediate lessor enters into a five-year lease for 5,000 square metres of office space (the head lease) with Entity A (the head lessor).

Sublease—At commencement of the head lease, the intermediate lessor subleases the 5,000 square metres of office space for two years to a sublessee.

The intermediate lessor classifies the sublease by reference to the right-of-use asset arising from the head lease. The intermediate lessor classifies the sublease as an operating lease, having considered the requirements in paragraphs 61–66 of IFRS 16.

When the intermediate lessor enters into the sublease, the intermediate lessor retains the lease liability and the right-of-use asset relating to the head lease in its statement of financial position.

During the term of the sublease, the intermediate lessor:

- (a) recognises a depreciation charge for the right-of-use asset and interest on the lease liability; and
- (b) recognises lease income from the sublease.

Lessee disclosure (paragraphs 59 and B49–B50)

IE9 Example 22 illustrates how a lessee with different types of lease portfolios might comply with the disclosure requirements described in paragraphs 59 and B49 of IFRS 16 about variable lease payments. This example shows only current period information. IAS 1 *Presentation of Financial Statements* requires an entity to present comparative information.

Example 22—Variable payment terms**Lessee with a high volume of leases with some consistent payment terms**

Example 22A: a retailer (Lessee) operates a number of different branded retail stores—A, B, C and D. Lessee has a high volume of property leases. Lessee's group policy is to negotiate variable payment terms for newly established stores. Lessee concludes that information about variable lease payments is relevant to users of its financial statements and is not available elsewhere in its financial statements. In particular, Lessee concludes that information about the proportion of total lease payments that arise from variable payments, and the sensitivity of those variable lease payments to changes in sales, is the information that is relevant to users of its financial statements. This information is similar to that reported to Lessee's senior management about variable lease payments.

Some of the property leases within the group contain variable payment terms that are linked to sales generated from the store. Variable payment terms are used, when possible, in newly established stores in order to link rental payments to store cash flows and minimise fixed costs. Fixed and variable rental payments by store brand for the period ended 31 December 20X0 are summarised below.

	Stores	Fixed payments	Variable payments	Total payments	Estimated annual impact on total brand rent of a 1% increase in sales
	No.	CU	CU	CU	%
Brand A	4,522	3,854	120	3,974	0.03%
Brand B	965	865	105	970	0.11%
Brand C	124	26	163	189	0.86%
Brand D	652	152	444	596	0.74%
	6,263	4,897	832	5,729	0.15%

Refer to the management commentary for store information presented on a like-for-like basis and to Note X for segmental information applying IFRS 8 *Operating Segments* relating to Brands A–D.

continued...

...continued

Example 22—Variable payment terms

Example 22B: a retailer (Lessee) has a high volume of property leases of retail stores. Many of these leases contain variable payment terms linked to sales from the store. Lessee's group policy sets out the circumstances in which variable payment terms are used and all lease negotiations must be approved centrally. Lease payments are monitored centrally. Lessee concludes that information about variable lease payments is relevant to users of its financial statements and is not available elsewhere in its financial statements. In particular, Lessee concludes that information about the different types of contractual terms it uses with respect to variable lease payments, the effect of those terms on its financial performance and the sensitivity of variable lease payments to changes in sales is the information that is relevant to users of its financial statements. This is similar to the information that is reported to Lessee's senior management about variable lease payments.

Many of the property leases within the group contain variable payment terms that are linked to the volume of sales made from leased stores. These terms are used, when possible, in order to match lease payments with stores generating higher cash flows. For individual stores, up to 100 per cent of lease payments are on the basis of variable payment terms and there is a wide range of sales percentages applied. In some cases, variable payment terms also contain minimum annual payments and caps.

Lease payments and terms for the period ended 31 December 20X0 are summarised below.

	Stores	Fixed	Variable	Total payments
	No.	payments	payments	
		CU	CU	CU
Fixed rent only	1,490	1,153	-	1,153
Variable rent with no minimum	986	-	562	562
Variable rent with minimum	3,089	1,091	1,435	2,526
	5,565	2,244	1,997	4,241

A 1 per cent increase in sales across all stores in the group would be expected to increase total lease payments by approximately 0.6–0.7 per cent. A 5 per cent increase in sales across all stores in the group would be expected to increase total lease payments by approximately 2.6–2.8 per cent.

continued...

...continued

Example 22—Variable payment terms	
Lessee with a high volume of leases with a wide range of different payment terms	
<i>Example 22C: a retailer (Lessee) has a high volume of property leases of retail stores. These leases contain a wide range of different variable payment terms. Lease terms are negotiated and monitored by local management. Lessee concludes that information about variable lease payments is relevant to users of its financial statements and is not available elsewhere in its financial statements. Lessee concludes that information about how its property lease portfolio is managed is the information that is relevant to users of its financial statements. Lessee also concludes that information about the expected level of variable lease payments in the coming year (similar to that reported internally to senior management) is also relevant to users of its financial statements.</i>	
Many of the property leases within the group contain variable payment terms. Local management are responsible for store margins. Accordingly, lease terms are negotiated by local management and contain a wide range of payment terms. Variable payment terms are used for a variety of reasons, including minimising the fixed cost base for newly established stores or for reasons of margin control and operational flexibility. Variable lease payment terms vary widely across the group:	
(a)	the majority of variable payment terms are based on a range of percentages of store sales;
(b)	lease payments based on variable terms range from 0–20 per cent of total lease payments on an individual property; and
(c)	some variable payment terms include minimum or cap clauses.
The overall financial effect of using variable payment terms is that higher rental costs are incurred by stores with higher sales. This facilitates the management of margins across the group.	
Variable rent expenses are expected to continue to represent a similar proportion of store sales in future years.	

IE10 Example 23 illustrates how a lessee with different types of lease portfolios might comply with the disclosure requirements described in paragraphs 59 and B50 of IFRS 16 about extension options and termination options. This example shows only current period information. IAS 1 requires an entity to present comparative information.

Example 23—Extension options and termination options**Lessee with a high volume of leases, that have a wide range of different terms and conditions, which are not managed centrally**

Example 23A: Lessee has a high volume of equipment leases with a wide range of different terms and conditions. Lease terms are negotiated and monitored by local management. Lessee concludes that information about how it manages the use of termination and extension options is the information that is relevant to users of its financial statements and is not available elsewhere in its financial statements. Lessee also concludes that information about (a) the financial effect of reassessing options and (b) the proportion of its short-term lease portfolio resulting from leases with annual break clauses is also relevant to users of its financial statements.

Extension and termination options are included in a number of equipment leases across the group. Local teams are responsible for managing their leases and, accordingly, lease terms are negotiated on an individual basis and contain a wide range of different terms and conditions. Extension and termination options are included, when possible, to provide local management with greater flexibility to align its need for access to equipment with the fulfilment of customer contracts. The individual terms and conditions used vary across the group.

The majority of extension and termination options held are exercisable only by Lessee and not by the respective lessors. In cases in which Lessee is not reasonably certain to use an optional extended lease term, payments associated with the optional period are not included within lease liabilities.

During 20X0, the financial effect of revising lease terms to reflect the effect of exercising extension and termination options was an increase in recognised lease liabilities of CU489.

In addition, Lessee has a number of lease arrangements containing annual break clauses at no penalty. These leases are classified as short-term leases and are not included within lease liabilities. The short-term lease expense of CU30 recognised during 20X0 included CU27 relating to leases with an annual break clause.

continued...

...continued

Example 23—Extension options and termination options				
Lessee with a high volume of leases with some consistent terms and options				
<p><i>Example 23B: a restaurateur (Lessee) has a high volume of property leases containing penalty-free termination options that are exercisable at the option of Lessee. Lessee's group policy is to have termination options in leases of more than five years, whenever possible. Lessee has a central property team that negotiates leases. Lessee concludes that information about termination options is relevant to users of its financial statements and is not available elsewhere in its financial statements. In particular, Lessee concludes that information about (a) the potential exposure to future lease payments that are not included in the measurement of lease liabilities and (b) the proportion of termination options that have been exercised historically is the information that is relevant to users of its financial statements. Lessee also notes that presenting this information on the basis of the same restaurant brands for which segment information is disclosed applying IFRS 8 is relevant to users of its financial statements. This is similar to the information that is reported to Lessee's senior management about termination options.</i></p> <p>Many of the property leases across the group contain termination options. These options are used to limit the period to which the group is committed to individual lease contracts and to maximise operational flexibility in terms of opening and closing individual restaurants. For most leases of restaurants, recognised lease liabilities do not include potential future rental payments after the exercise date of termination options because Lessee is not reasonably certain to extend the lease beyond that date. This is the case for most leases for which a longer lease period can be enforced only by Lessee and not by the landlord, and for which there is no penalty associated with the option.</p> <p>Potential future rental payments relating to periods following the exercise date of termination options are summarised below.</p>				
Business segment	Lease liabilities recognised (discounted)	Potential future lease payments not included in lease liabilities (undiscounted)		
		Payable during 20X1–20X5	Payable during 20X6–20Y0	Total
	CU	CU	CU	CU
Brand A	569	71	94	165
Brand B	2,455	968	594	1,562
Brand C	269	99	55	154
Brand D	1,002	230	180	410
Brand E	914	181	321	502
	5,209	1,549	1,244	2,793

continued...

...continued

Example 23—Extension options and termination options			
The table below summarises the rate of exercise of termination options during 20X0.			
Business segment	Termination option exercisable during 20X0	Termination option not exercised	Termination option exercised
	No. of leases	No. of leases	No. of leases
Brand A	33	30	3
Brand B	86	69	17
Brand C	19	18	1
Brand D	30	5	25
Brand E	66	40	26
	234	162	72

Example 23C: Lessee has a high volume of large equipment leases containing extension options that are exercisable by Lessee during the lease. Lessee's group policy is to use extension options to align, when possible, committed lease terms for large equipment with the initial contractual term of associated customer contracts, whilst retaining flexibility to manage its large equipment and reallocate assets across contracts. Lessee concludes that information about extension options is relevant to users of its financial statements and is not available elsewhere in its financial statements. In particular, Lessee concludes that (a) information about the potential exposure to future lease payments that are not included in the measurement of lease liabilities and (b) information about the historical rate of exercise of extension options is the information that is relevant to users of its financial statements. This is similar to the information that is reported to Lessee's senior management about extension options.

Many of the large equipment leases across the group contain extension options. These terms are used to maximise operational flexibility in terms of managing contracts. These terms are not reflected in measuring lease liabilities in many cases because the options are not reasonably certain to be exercised. This is generally the case when the underlying large equipment has not been allocated for use on a particular customer contract after the exercise date of an extension option. The table below summarises potential future rental payments relating to periods following the exercise dates of extension options.

continued...

...continued

Example 23—Extension options and termination options			
Business segment	Lease liabilities recognised (discounted)	Potential future lease payments not included in lease liabilities (discounted)	Historical rate of exercise of extension options
	CU	CU	%
Segment A	569	799	52%
Segment B	2,455	269	69%
Segment C	269	99	75%
Segment D	1,002	111	41%
Segment E	914	312	76%
	5,209	1,590	67%

Sale and leaseback transactions (paragraphs 98–103)

IE11 Example 24 illustrates the application of the requirements in paragraphs 99–102 of IFRS 16 for a seller-lessee and a buyer-lessor.

Example 24—Sale and leaseback transaction
<p>An entity (Seller-lessee) sells a building to another entity (Buyer-lessor) for cash of CU2,000,000. Immediately before the transaction, the building is carried at a cost of CU1,000,000. At the same time, Seller-lessee enters into a contract with Buyer-lessor for the right to use the building for 18 years, with annual payments of CU120,000 payable at the end of each year. The terms and conditions of the transaction are such that the transfer of the building by Seller-lessee satisfies the requirements for determining when a performance obligation is satisfied in IFRS 15 Revenue from Contracts with Customers. Accordingly, Seller-lessee and Buyer-lessor account for the transaction as a sale and leaseback. This example ignores any initial direct costs.</p>

continued...

...continued

Example 24—Sale and leaseback transaction

The fair value of the building at the date of sale is CU1,800,000. Because the consideration for the sale of the building is not at fair value, Seller-lessee and Buyer-lessor make adjustments to measure the sale proceeds at fair value. The amount of the excess sale price of CU200,000 (CU2,000,000 – CU1,800,000) is recognised as additional financing provided by Buyer-lessor to Seller-lessee.

The interest rate implicit in the lease is 4.5 per cent per annum, which is readily determinable by Seller-lessee. The present value of the annual payments (18 payments of CU120,000, discounted at 4.5 per cent per annum) amounts to CU1,459,200, of which CU200,000 relates to the additional financing and CU1,259,200 relates to the lease—corresponding to 18 annual payments of CU16,447 and CU103,553, respectively.

Buyer-lessor classifies the lease of the building as an operating lease.

Seller-lessee

At the commencement date, Seller-lessee measures the right-of-use asset arising from the leaseback of the building at the proportion of the previous carrying amount of the building that relates to the right of use retained by Seller-lessee, which is CU699,555. This is calculated as: CU1,000,000 (the carrying amount of the building) ÷ CU1,800,000 (the fair value of the building) × CU1,259,200 (the discounted lease payments for the 18-year right-of-use asset).

Seller-lessee recognises only the amount of the gain that relates to the rights transferred to Buyer-lessor of CU240,355 calculated as follows. The gain on sale of building amounts to CU800,000 (CU1,800,000 – CU1,000,000), of which:

- (a) CU559,645 (CU800,000 ÷ CU1,800,000 × CU1,259,200) relates to the right to use the building retained by Seller-lessee; and
- (b) CU240,355 (CU800,000 ÷ CU1,800,000 × (CU1,800,000 – CU1,259,200)) relates to the rights transferred to Buyer-lessor.

continued...

...continued

Example 24—Sale and leaseback transaction		
At the commencement date, Seller-lessee accounts for the transaction as follows.		
Cash		CU2,000,000
Right-of-use asset		CU699,555
Building		CU1,000,000
Financial liability		CU1,459,200
Gain on rights transferred		CU240,355
<u>Buyer-lessor</u>		
At the commencement date, Buyer-lessor accounts for the transaction as follows.		
Building		CU1,800,000
Financial asset		CU200,000 (18 payments of CU16,447, discounted at 4.5 per cent per annum)
Cash		CU2,000,000
After the commencement date, Buyer-lessor accounts for the lease by treating CU103,553 of the annual payments of CU120,000 as lease payments. The remaining CU16,447 of annual payments received from Seller-lessee are accounted for as (a) payments received to settle the financial asset of CU200,000 and (b) interest revenue.		

Appendix Amendments to guidance on other Standards

This appendix describes the amendments to guidance on other Standards that the IASB made when it finalised IFRS 16.

Amended paragraphs are shown with deleted text struck through and new text underlined.

IFRS 1 *First-time Adoption of International Financial Reporting Standards*

In the Implementation Guidance, paragraph IG4, IG14 and its related heading, IG22 and Example 7 are amended. Paragraphs IG15–IG16, IG204–IG206 and their related heading and Example 202 are deleted.

IAS 10 *Events after the Reporting Period*

...

IG4 Paragraphs 14–17 of the IFRS do not override requirements in other IFRSs that base classifications or measurements on circumstances existing at a particular date. Examples include:

- (a) the distinction between finance leases and operating leases for a lessor (see IAS 17 IFRS 16 *Leases* and paragraph IG14);
- (b) ...

IAS 17 IFRS 16 *Leases*

IG14 At the date of transition to IFRSs, a lessee ~~or~~ lessor classifies leases as operating leases or finance leases on the basis of circumstances existing at the inception of the lease (IAS 17 IFRS 16 paragraph 1366). Lease classification is reassessed only if there is a lease modification. ~~In some cases, the lessee and the lessor may agree to change the provisions of the lease, other than by renewing the lease, in a manner that would have resulted in a different classification in accordance with IAS 17 had the changed terms been in effect at the inception of the lease. If so, the revised agreement is considered as a new agreement over its term. However,~~ Changes in estimates (for example, changes in estimates of the economic life or of the residual value of the leased property underlying asset) or changes in circumstances (for example, default by the lessee) do not give rise to a new classification of a lease.

IG15 ~~[Deleted] When IAS 17 was revised in 1997, the net cash investment method for recognising finance income of lessors was eliminated. IAS 17 permits finance lessors to eliminate this method prospectively. However, the transitional provisions in IAS 17 do not apply to an entity's opening IFRS statement of financial position (paragraph 9 of the IFRS). Therefore, a finance lessor measures finance lease receivables in its opening IFRS statement of financial position as if the net cash investment method had never been permitted.~~

- IG16 ~~[Deleted] SIC-15 *Operating Leases—Incentives* applies to lease terms beginning on or after 1 January 1999. However, a first-time adopter applies SIC-15 to all leases, whether they started before or after that date.~~

IFRS 3 *Business Combinations*

- IG22 The following examples illustrate the effect of Appendix C of the IFRS, assuming that a first-time adopter uses the exemption.

...

<p>IG Example 7 Business combination—finance lease in which the acquirer was a lessee not capitalised in accordance with previous GAAP</p>
<p>Background</p> <p>Parent L's date of transition to IFRSs is 1 January 20X4. Parent L acquired subsidiary M on 15 January 20X1 and did not capitalise subsidiary M's finance leases in which subsidiary M was a lessee. If subsidiary M prepared financial statements in accordance with IFRSs, it would recognise finance lease obligations <u>liabilities</u> of CU300 and leased right-of-use <u>assets</u> of CU250 at 1 January 20X4.</p> <p>Application of requirements</p> <p>Parent L has elected not to <u>apply the transition reliefs in paragraphs D9 and D9B-D9E of this Standard</u>. In its consolidated opening IFRS statement of financial position, parent L recognises finance lease obligations <u>liabilities</u> of CU300 and leased right-of-use <u>assets</u> of CU250, and charges CU50 to retained earnings (paragraph C4(f)).</p>

IFRIC 4 *Determining whether an Arrangement contains a Lease*

- IG204 ~~[Deleted] IFRIC 4 specifies criteria for determining, at the inception of an arrangement, whether the arrangement contains a lease. It also specifies when an arrangement should be reassessed subsequently.~~
- IG205 ~~[Deleted] Paragraph D9 of the IFRS provides a transitional exemption. Instead of determining retrospectively whether an arrangement contains a lease at the inception of the arrangement and subsequently reassessing that arrangement as required in the periods before transition to IFRSs, entities may determine whether arrangements in existence on the date of transition to IFRSs contain leases by applying paragraphs 6–9 of IFRIC 4 to those arrangements on the basis of facts and circumstances existing on that date.~~

IG Example 202 Determining whether an arrangement contains a lease**Background**

An entity's first IFRS financial statements are for a period that ends on 31 December 20Y7 and include comparative information for 20Y6 only. Its date of transition to IFRSs is therefore 1 January 20Y6.

On 1 January 20X5 the entity entered into a take-or-pay arrangement to supply gas. On 1 January 20Y0, there was a change in the contractual terms of the arrangement.

Application of requirements

On 1 January 20Y6 the entity may determine whether the arrangement contains a lease by applying the criteria in paragraphs 6–9 of IFRIC 4 on the basis of facts and circumstances existing on that date. Alternatively, the entity applies those criteria on the basis of facts and circumstances existing on 1 January 20X5 and reassesses the arrangement on 1 January 20Y0. If the arrangement is determined to contain a lease, the entity follows the guidance in paragraphs IG14–IG16.

IG206 ~~[Deleted] Paragraph D9A of IFRS 1 provides a transitional exemption in addition to that discussed in paragraph IG205. The exemption in paragraph D9A applies only to arrangements that were assessed in the same manner as required by IFRIC 4. If arrangements exist at the date of transition to IFRSs that an entity did not assess under previous GAAP in the same manner as required by IFRIC 4 to determine whether they contain a lease, the entity may apply the transition exemption discussed in paragraph IG205.~~

IFRS 3 Business Combinations

In the Illustrative Examples, paragraph IE34 is amended.

Contract-based intangible assets

IE34 Contract-based intangible assets represent the value of rights that arise from contractual arrangements. Customer contracts are one type of contract-based intangible asset. If the terms of a contract give rise to a liability (for example, if the terms of ~~an operating lease or a~~ customer contract are unfavourable relative to market terms), the acquirer recognises it as a liability assumed in the business combination. Examples of contract-based intangible assets are:

Class	Basis
...	...
Lease agreements (whether the acquiree is the lessee or the lessor)	Contractual
...	...
...	...

IFRS 4 Insurance Contracts

In the Implementation Guidance, IG Example 1 is amended.
--

IG Example 1: Application of the definition of an insurance contract

...		
1.15	Residual value insurance or residual value guarantee. Guarantee by one party of the fair value at a future date of a non-financial asset held by a beneficiary of the insurance or guarantee.	Insurance contract within the scope of the IFRS (unless changes in the condition of the asset have an insignificant effect). The risk of changes in the fair value of the non-financial asset is not a financial risk because the fair value reflects not only changes in market prices for such assets (a financial variable) but also the condition of the specific asset held (a non-financial variable). However, if the contract compensates the beneficiary only for changes in market prices and not for changes in the condition of the beneficiary's asset, the contract is a derivative and within the scope of IAS 39. Residual value guarantees given by a lessee under a finance lease are within the scope of IAS 17 IFRS 16 Leases .
...		

IFRS 5 Non-current Assets Held for Sale and Discontinued Operations

In the Implementation Guidance, Example 4 is amended.

Completion of sale expected within one year (paragraph 8)**Example 4**

To qualify for classification as held for sale, the sale of a non-current asset (or disposal group) must be highly probable (paragraph 7), and transfer of the asset (or disposal group) must be expected to qualify for recognition as a completed sale within one year (paragraph 8). That criterion would not be met if, for example:

(a) ...

- (b) an entity is committed to a plan to 'sell' a property that is in use, and the transfer of the property will be accounted for as a sale and finance leaseback as part of a sale and leaseback transaction, but the transfer does not qualify to be accounted for as a sale in accordance with paragraph 99 of IFRS 16 *Leases* and, instead, will be accounted for in accordance with paragraph 103 of IFRS 16.

IFRS 7 *Financial Instruments: Disclosures*

In the Implementation Guidance paragraph IG31A and its related heading are added.

Liquidity risk disclosures (paragraph 39(a))

IG31A The following examples illustrate how an entity might meet the disclosure requirement in paragraph 39(a).

Illustrating the application of paragraph 39(a)

Undiscounted cash flows: Non-derivative financial liabilities								
Maturity								
	Total	less than 1 month	1–3 months	3–6 months	6 months – 1 year	1–3 years	3–5 years	more than 5 years
Bank borrowings	1,625				285	740	600	
Lease liabilities	2,300	70	140	210	400	750	620	110
Trade and other payables	350	70	190	90				

Illustrating the application of paragraph 39(a)

Undiscounted cash flows: Non-derivative financial liabilities									
Maturity									
	Total	less than 1 year	1–2 years	2–3 years	3–4 years	4–5 years	5–7 years	7–10 years	more than 10 years
Bank borrowings	3,100	40	300	38	280	2,442			
Lease liabilities	4,400	500	500	480	430	430	790	800	470
Trade and other payables	95	95							

Illustrating the application of paragraph 39(a)

Undiscounted cash flows: Non-derivative financial liabilities							
Maturity							
	Total	less than 1 month	1–6 months	6 months– 1 year	1–2 years	2–3 years	more than 3 years
Bonds	2,100	7	34	40	79	1,940	
Lease liabilities*	4,970			340	310	290	4,030
Trade and other payables	980	280	700				

*Further information about the maturity of lease liabilities is provided in the table below:

Maturity							
	Total	less than 1 year	1–5 years	5–10 years	10–15 years	15–20 years	20–25 years
Lease liabilities	4,970	340	1,200	1,110	1,050	970	300

IFRS 15 Revenue from Contracts with Customers

In the Illustrative Examples, paragraph IE321 is amended.

Example 62—Repurchase agreements

...

IE321 In accordance with paragraphs B70–B71 of IFRS 15, the entity accounts for the transaction as a lease in accordance with ~~IAS 17~~ IFRS 16 Leases.

IAS 7 Statements of Cash Flows

In the Illustrative Examples, Example A is amended.

A Statement of cash flows for an entity other than a financial institution

...

3 The following additional information is also relevant for the preparation of the statements of cash flows:

- ...

- during the period, the group acquired property, plant and equipment and right-of-use assets relating to property, plant and equipment with an aggregate cost of 1,250, of which 900 was acquired by means of finance leases related to right-of-use assets. Cash payments of 350 were made to purchase property, plant and equipment.
- ...

Direct method statement of cash flows (paragraph 18(a))

	20X2
...	
Cash flows from financing activities	
...	
Payment of finance lease liabilities	(90)
...	

Indirect method statement of cash flows (paragraph 18(b))

	20X2
...	
Cash flows from financing activities	
...	
Payment of finance lease liabilities	(90)
...	

Notes to the statement of cash flows (direct method and indirect method)

...

B. Property, plant and equipment

During the period, the Group acquired property, plant and equipment and right-of-use assets relating to property, plant and equipment with an aggregate cost of 1,250, of which 900 was acquired by means of finance leases related to right-of-use assets. Cash payments of 350 were made to purchase property, plant and equipment.

IAS 32 *Financial Instruments: Presentation*

In the Application Guidance, paragraphs AG9 and AG10 are amended.

Financial assets and financial liabilities

...

AG9 ~~Under IAS 17 *Leases* a finance lease is regarded as primarily~~ A lease typically creates an entitlement of the lessor to receive, and an obligation of the lessee to pay, a stream of payments that are substantially the same as blended payments of principal and interest under a loan agreement. The lessor accounts for its

investment in the amount receivable under a finance lease contract rather than the leased underlying asset itself that is subject to the finance lease. Accordingly, a lessor regards a finance lease as a financial instrument. An operating lease, on the other hand, is regarded as primarily an uncompleted contract committing the lessor to provide the use of an asset in future periods in exchange for consideration similar to a fee for a service. Under IFRS 16, a lessor does not recognise its entitlement to receive lease payments under an operating lease. The lessor continues to account for the leased underlying asset itself rather than any amount receivable in the future under the contract. Accordingly, a finance lease is regarded as a financial instrument and an operating lease is not regarded as a financial instrument (except as regards individual payments currently due and payable) a lessor does not regard an operating lease as a financial instrument, except as regards individual payments currently due and payable by the lessee.

- AG10 Physical assets (such as inventories, property, plant and equipment), leased right-of-use assets and intangible assets (such as patents and trademarks) are not financial assets. Control of such physical assets, right-of-use assets and intangible assets creates an opportunity to generate an inflow of cash or another financial asset, but it does not give rise to a present right to receive cash or another financial asset.

...

IAS 34 *Interim Financial Reporting*

In the Illustrative Examples, paragraphs B7 and C7 are amended.

Contingent Variable lease payments

- B7 ~~Contingent Variable~~ lease payments based on sales can be an example of a legal or constructive obligation that is recognised as a liability. If a lease provides for ~~contingent variable~~ payments based on the lessee achieving a certain level of annual sales, an obligation can arise in the interim periods of the financial year before the required annual level of sales has been achieved, if that required level of sales is expected to be achieved and the entity, therefore, has no realistic alternative but to make the future lease payment.

C Examples of the use of estimates

...

- C7 **Revaluations and fair value accounting:** IAS 16 *Property, Plant and Equipment* allows an entity to choose as its accounting policy the revaluation model whereby items of property, plant and equipment are revalued to fair value. IFRS 16 Leases allows a lessee to measure right-of-use assets applying the revaluation model in IAS 16 if those right-of-use assets relate to a class of property, plant and equipment to which the lessee applies the revaluation model in IAS 16. Similarly, IAS 40 *Investment Property* requires an entity to

measure the fair value of investment property. For those measurements, an entity may rely on professionally qualified valuers at annual reporting dates though not at interim reporting dates.

...

IAS 37 Provisions, Contingent Liabilities and Contingent Assets

In the Illustrative Examples, in Section C, Example 8 is deleted.

Example 8 An onerous contract

~~[Deleted] An entity operates profitably from a factory that it has leased under an operating lease. During December 20X0 the entity relocates its operations to a new factory. The lease on the old factory continues for the next four years, it cannot be cancelled and the factory cannot be re-let to another user.~~

~~**Present obligation as a result of a past obligating event** – The obligating event is the signing of the lease contract, which gives rise to a legal obligation.~~

~~**An outflow of resources embodying economic benefits in settlement** – When the lease becomes onerous, an outflow of resources embodying economic benefits is probable. (Until the lease becomes onerous, the entity accounts for the lease under IAS 17 Leases.)~~

~~**Conclusion** – A provision is recognised for the best estimate of the unavoidable lease payments (see paragraphs 5(c), 14 and 66).~~

IAS 39 Financial Instruments: Recognition and Measurement

In the Application Guidance, paragraph AG33 is amended for an entity that has not adopted IFRS 9 *Financial Instruments*. The Application Guidance is not amended for an entity that has adopted IFRS 9.

Embedded derivatives (paragraphs 10–13)

...

AG33 The economic characteristics and risks of an embedded derivative are closely related to the economic characteristics and risks of the host contract in the following examples. In these examples, an entity does not account for the embedded derivative separately from the host contract.

(a) ...

(f) An embedded derivative in a host lease contract is closely related to the host contract if the embedded derivative is (i) an inflation-related index such as an index of lease payments to a consumer price index (provided that the lease is not leveraged and the index relates to inflation in the entity's own economic environment), (ii) ~~contingent rentals~~ variable lease payments based on related sales or (iii) ~~contingent rentals~~ variable lease payments based on variable interest rates.

(g) ...

IFRIC 12 Service Concession Arrangements

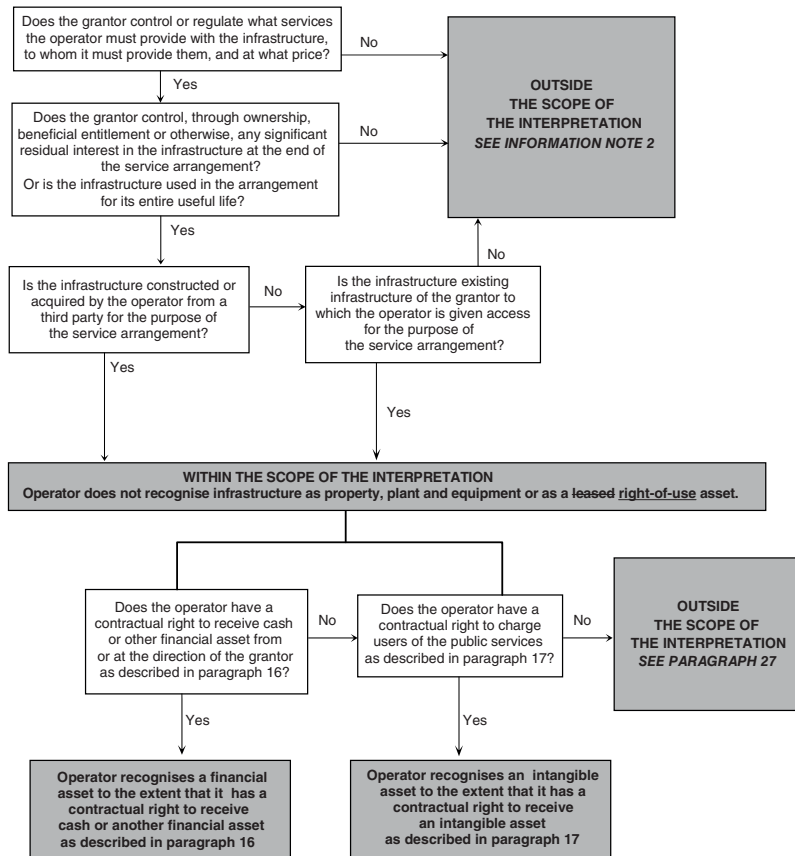
In the Implementation Guidance, Information note 1 is amended. Information note 2, as amended by IFRS 15, is amended.

Information note 1

Accounting framework for public-to-private service arrangements

...

The diagram below summarises the accounting for service arrangements established by IFRIC 12.



Information note 2

References to IFRSs that apply to typical types of public-to-private arrangements

...

The table sets out the typical types of arrangements for private sector participation in the provision of public sector services and provides references to IFRSs that apply to those arrangements. The list of arrangements types is not exhaustive. The purpose of the table is to highlight the continuum of arrangements. It is not the IFRIC's intention to convey the impression that bright lines exist between the accounting requirements for public-to-private arrangements.

Category	Lessee	Service provider			Owner	
Typical arrangement types	Lease (eg Operator leases assets from grantor)	Service and/or maintenance contract (specific tasks eg debt collection)	Rehabilitate-operate-transfer	Build-operate-transfer	Build-own-operate	100% Divestment/Privatisation/Corporation
Asset ownership	Grantor				Operator	
Capital investment	Grantor		Operator			
Demand risk	Shared	Grantor	Operator and/or Grantor		Operator	
Typical duration	8–20 years	1–5 years	25–30 years			Indefinite (or may be limited by licence)
Residual interest	Grantor				Operator	
Relevant IFRSs	IAS 17 IFRS 16	IFRS 15	IFRIC 12		IAS 16	

SET I



ILLUSTRATIVE EXAMPLES ISBN 978-1-911040-06-4

International Accounting Standards Board® (IASB®)
The IASB is the independent standard-setting body of the IFRS Foundation®

30 Cannon Street | London EC4M 6XH | United Kingdom
Telephone: +44 (0)20 7246 6410 | Fax: +44 (0)20 7246 6411
Email: info@ifrs.org | Web: www.ifrs.org

Publications Department
Telephone: +44 (0)20 7332 2730 | Fax: +44 (0)20 7332 2749
Email: publications@ifrs.org